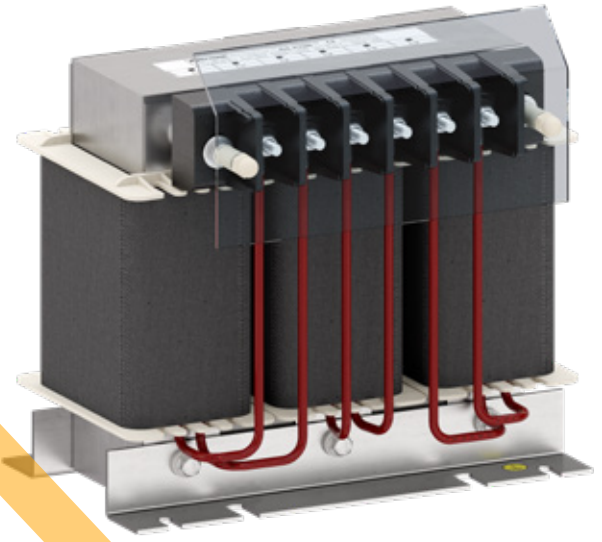


THREE PHASE dV/dt REACTOR FOR OUTPUT OF VDF



Serie IMT

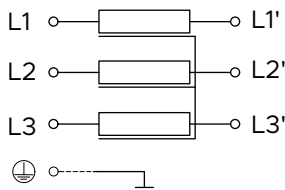
Three phase dV/dt filtering reactor for the output of variable frequency drives.



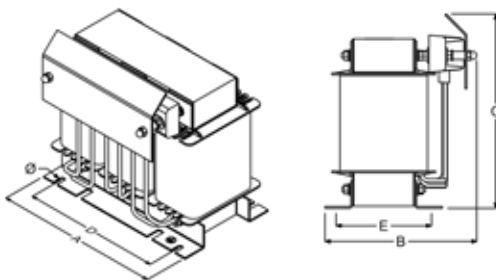
Advantages

- Decreases current ripple, reducing motor heat-up.
- Mitigates dv/dt voltage spikes and overvoltage, extending motor lifetime.
- Protected against dust and moisture with epoxy varnish.

Electrical diagram



Dimensions



Technical specifications

Reference	IMT030	
Power rating	15 kW	20CV
Nominal Voltage	380 ÷ 500 V	
Nominal Current	30 A	
Impedance	0.732 mH	3% 400V 50 Hz
VDF output frequency	0 ÷ 70Hz	
Commutation frequency	≤ 10 kHz	
Admissible overload	Permanent 1.07 I _N	Transitory 1.5 I _N
Ambient temperature	50 °C	
Insulation class	F (155 °C)	
Protection degree	IP00	
Safety class	Class I	
Test voltage	4 kV	
Standard	IEC/UNE-EN 60076-6	

Reference	Losses	Dimensions (mm)						Weight
		A	B	C	D	E	Ø	
IMT030	120 W	240	150	240	200	90	7	9.2 kg