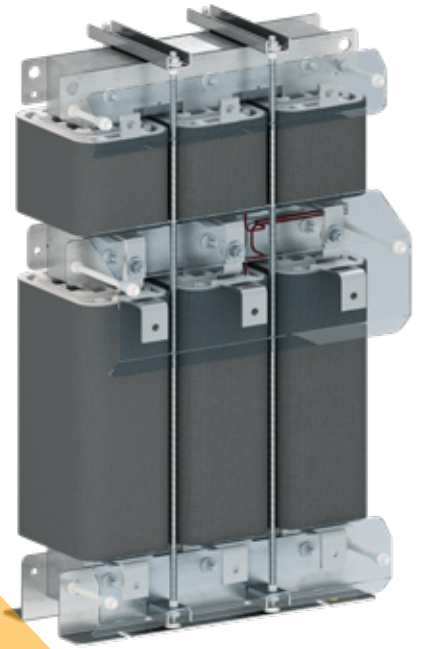


2-IN-1 THREE-PHASE REACTOR FOR LCL FILTER



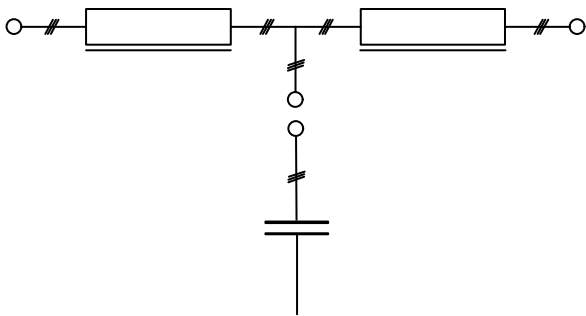
Serie
I2T

Three-phase inductance for integrated LCL sine filter
2 in 1 on L_{primary} and L_{secondary}.



Applications

- 🟡 Output filter PV inverter 1500Vdc
- 🟡 Grid filter eolic converter
- 🟡 Input filter AFE converter



Technical specifications

Reference	I2T7322
Nominal voltage	850 Vrms
Nominal current	350 Arms
Frecuency	50/60 Hz
L primary	250 µH
L secondary	50 µH
Ambient temperature	55 °C
Switching frequency	5 kHz
L1 current ripple	30 Arms
L2 current ripple	5 Arms
dV/dt	8.5 kV/µs
Insulation class	H (180 °C)
Cooling	AF ≈ 3m/s
Protection degree	IP00
Test voltage	4 kV
Standard	IEC/UNE-EN 60076-6 UL5085-1,-2 UL1446

Application electrical diagram

